

## Installation Guide:



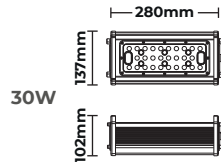
## Mounting Options:



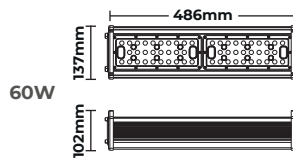
Suspension Mounting



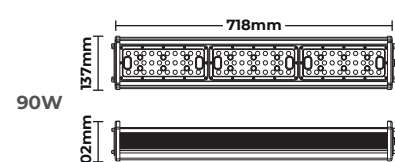
Wall mounting



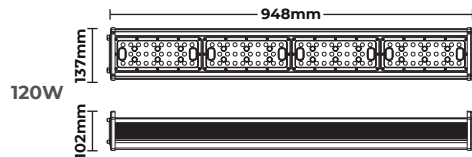
30W



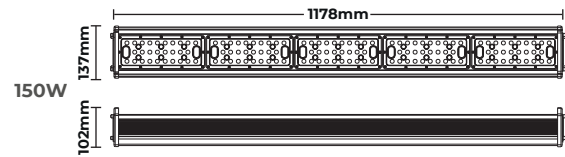
60W



90W



120W



150W

## General Notes and Cautions:

- These points to be read and followed in conjunction with pictorial installation instruction of Alloway I - LED Linear Highbay Light
- Only qualified and experienced personnel should perform the designing, installation, commissioning, operation and maintenance of lighting system conforming to latest applicable standards and codes.
- All civil, interior fit-out, electrical, control, lighting and commissioning related work for the installation, commissioning, operation and maintenance of these luminaires be performed by qualified and experienced team of supervisors, technicians and labor force.
- Ensure power supply is off during installation, electrical and control connections and maintenance activities. Take all precautionary measures and use PPE (personal protective equipment) to prevent electric shock and accidents.
- Mandatory to have proper grounding of luminaire.
- Luminaires to be fed from a compliant stable electrical system; panel, circuit protection devices including ELCBs, surge protectors, isolators, emergency power switch off etc.
- These luminaires are IP65 rated.
- Don't operate on generator or temporary power supply.
- Power supply must conform to input power supply rating of driver and be without any variations and distortions (transient voltages, spikes, unbalanced load, THDs, fluctuation).
- Follow power and control (polarity sensitive and applicable for dimming luminaire) connections as marked on the product connection terminals and driver. In case of any ambiguity, do contact us before doing any termination and energization should be done once 100%
- Recommended to first have a mockup installation at site prior to execution of work to eliminate any non-conformance related to civil, electrical and lighting works.
- Strongly recommended to install these luminaires after completion of work at site and chances of exposure to dust, moisture, humidity, paint and chemical fumes etc. are completely eliminated.
- During construction phase, protect luminaire from construction related pollutants; dust, moisture, chemicals, paint and physical damage etc.
- Never operate luminaire if covered with any protective sheet/coverings etc.
- Don't alter or modify the luminaire.
- Don't repair on your own non-functioning luminaires.
- In case of malfunction, switch off the power supply immediately and don't try to repair the faulty luminaire.
- Perform any maintenance work only in consultation with our technical team and use spares provided by us.

## WARNING

- 1 - Switch off before installation.
- 2 - Switch on only after complete installation and examination of the circuit.
- 3 - Professional electrician for installation and maintenance only.



## Wiring Codes:

**Non-Dimmable**

L (Brown), N (Blue), PE (Yellow/Green)

**Non-Dimmable**

L (Brown), N (Blue), PE (Green)

	1	2
L	Brown	Black
N	Blue	White
PE	yellow/green	green

1

Dim+ / Da1 (Purple), Dim- / Da2 (Gray)

1-10V / DALI Dimmable

2

Dim+ / Da1 (Purple), Dim- / Da2 (Pink)

1-10V / DALI Dimmable

3

Dim+ / Da1 (Blue), Dim- / Da2 (White)

1-10V / DALI Dimmable

4

Dim+ / Da1 (Brown), Dim- / Da2 (Blue)

1-10V / DALI Dimmable

	1	2	3	4
Dim+/DA1	Purple	Purple	Blue	Brown
Dim-/DA2	Gray	Pink	White	Blue

## Accessories (to be ordered separately):



Safety line  
AI-SL-01  
(2m long stainless  
steel)

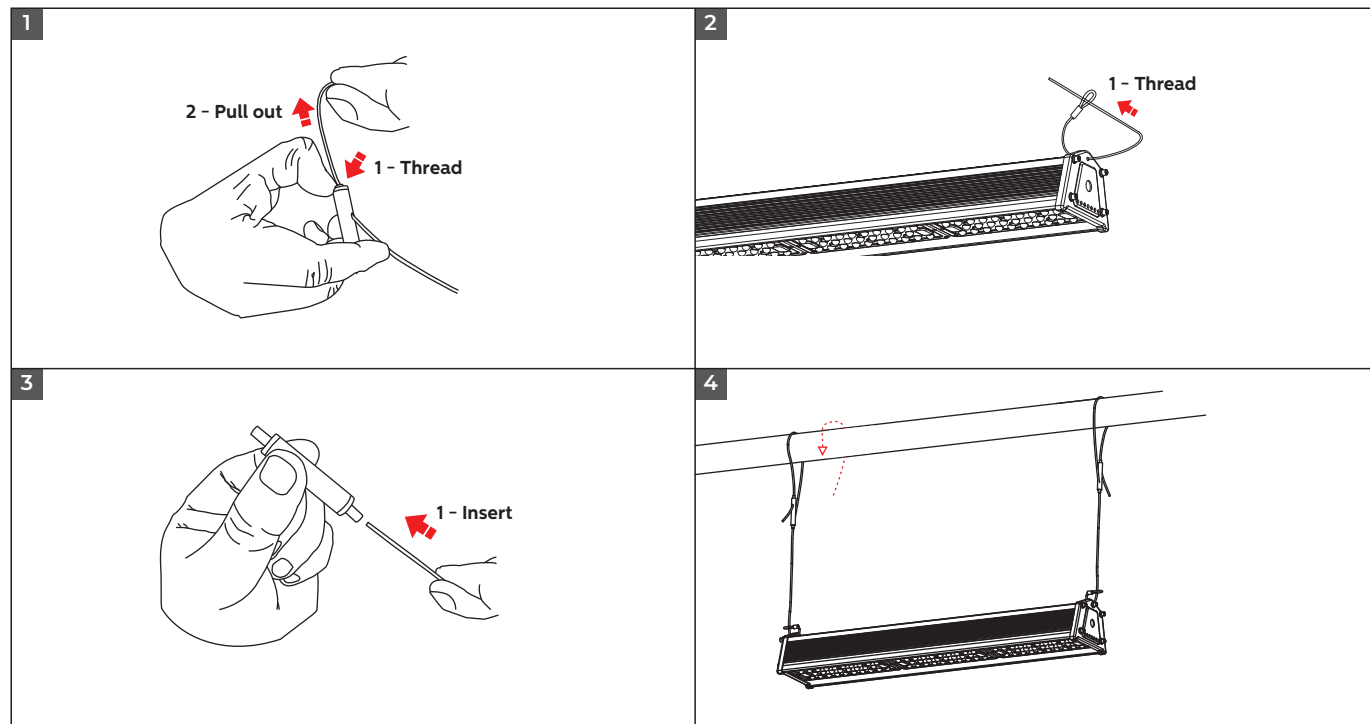


Ceiling mounted  
bracket  
AI-CMB-01a  
(30W-150W)

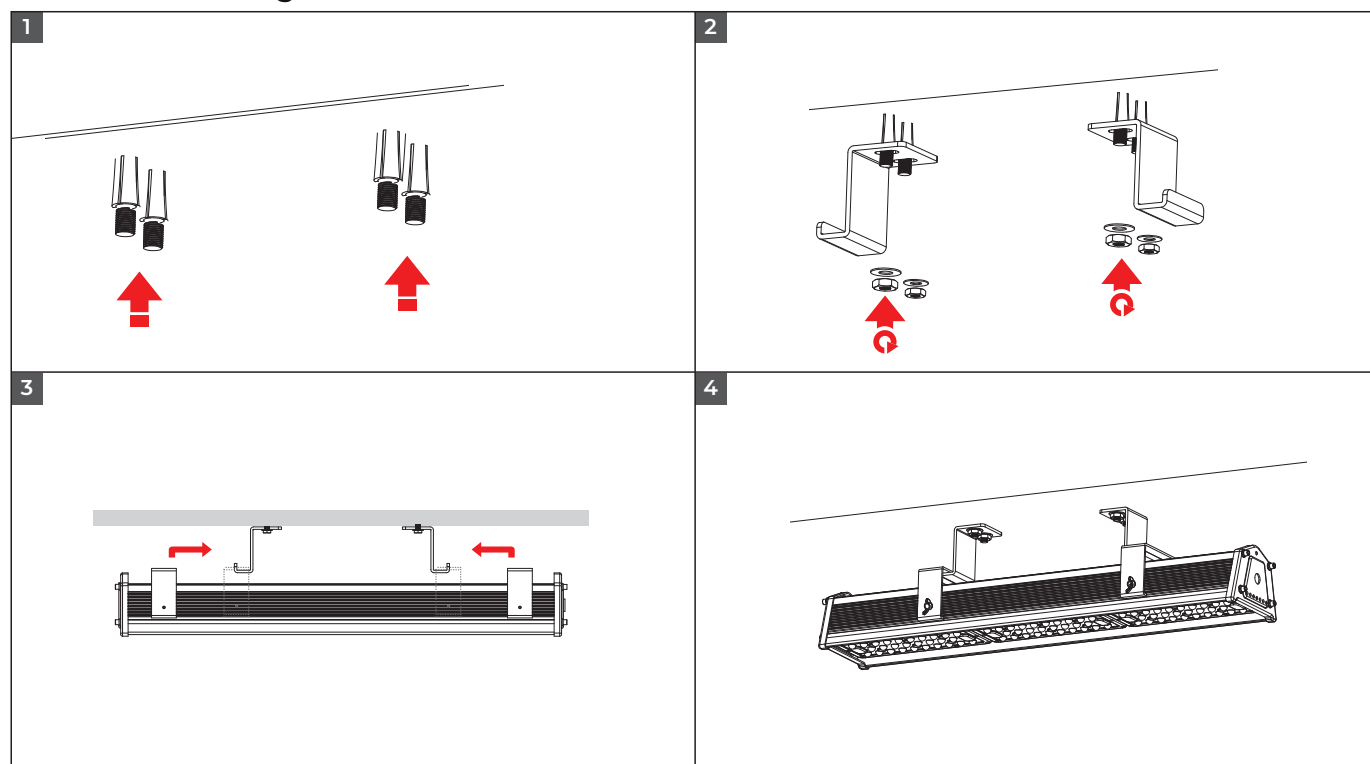


±50° adjustable  
bracket  
AL-AB-01a  
(30W-150W)

## 1- Suspended Installation:



## 2- Surface Mounting Installation:



### Disclaimer:

LuxeLED All rights reserved. LuxeLED does not give any representation or warranty as to the accuracy or completeness of the information included herein and shall not be liable for any action in reliance thereon. The information presented in this document is not intended as any commercial offer and does not form part of any quotation or contract, unless otherwise agreed by LuxeLED.