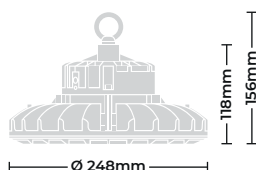
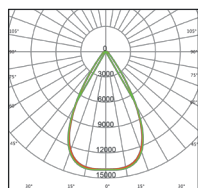


IP 65	IK 08	VAC 220/240 50/60Hz	CRI Ra 80	Ta 50°C		CE	CB
----------	----------	---------------------------	--------------	------------	--	----	----

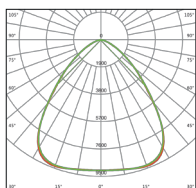
Beam : 60°, 85°, 120°  
Angles



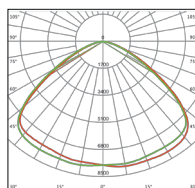
## Polar Diagrams:



Vulture I-5K-100W-60°-B-S



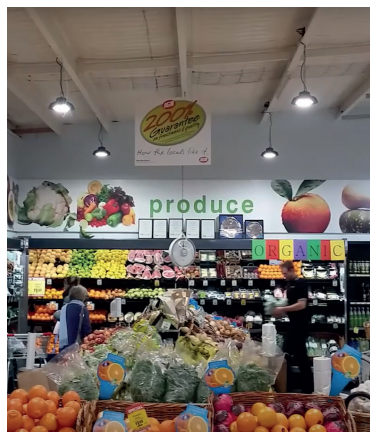
Vulture I-5K-100W-85°-B-S



Vulture I-5K-100W-120°-B-S

## Applications:

Warehouse, factory, industrial facility, exhibition centers, shopping malls, stadiums, toll stations.



## Accessories(Optional):



Safety chain available for 0.5m long SC-05



Adjustable Bracket AB-30

## Disclaimer:

LuxeLED All rights reserved. LuxeLED does not give any representation or warranty as to the accuracy or completeness of the information included herein and shall not be liable for any action in reliance thereon. The information presented in this document is not intended as any commercial offer and does not form part of any quotation or contract, unless otherwise agreed by LuxeLED.

## Key Information

Shape	Round
Mounting Type	Surface/Suspended
Mounting Location	Ceiling
Engine Orientation	Fixed/Adjustable with bracket
LED Type	SMD LED Module
System Power	100W/80W/60W(Selectable Power)
CCT(K)	5000K(Standard) 3000K and 4000K(Optional)
Lumens	16500LM / 13200LM / 9900LM
Lumen Output	165LM/W
CRI	80 Ra
SDCM	<3
UGR	<24
Lifespan L80 at 25°C	83000 hours

## Physical

Body material	Aluminum Alloy
Housing color	Black
Finish	Powder Coating
Lens	Polycarbonate Optical Lens
Diffuser Cover	PC
Dimension	Ø 248 X 156mm

## Environmental

Installation Environment	Industrial Facility
IK Rating	08
Operating Temperature	-30° to 50°C
IP Rating	IP65
Weight	2.100Kgs

## Driver

Input Voltage	220-240VAC 50/60Hz
Class Rating	Class I
Power factor	>0.92
Standard	On/off
Dimming Options	DALI / 0-10V / Casambi / PIR Sensor / Microwave Sensor

## Ordering Guide:

Product	CCT (K)	Wattage (W)	Beam (°)	Body Finish	Driver
Vulture I	3K=3000K 4K=4000K 5K=5000K	100W= (Selectable Power) 100W/80W/60W	60° 85° 120°	B=Black C=Custom	S=On/Off D=DALI V=0-10V C=Casambi P=PIR M=Microwave

Product Code	Wattage	CCT	Lumens	Dimensions (mm)
Vulture I-5K-100W-60°-B-S	100W	5000K	16500lm	Ø 248 X 156mm

\* Please contact us for other CCT(3000K and 4000K), and Dimming control options.